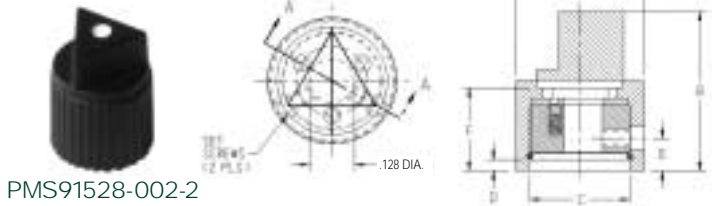


PMS91528-002-1

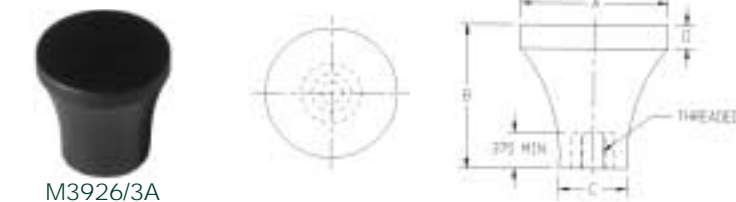


PMS91528-002-2

Series Number

	A Base Diam.	B Height	C Nut Clearance	D Nut Clearance	E	F
1	0.500	0.655	0.300	0.177	.0325	0.470
2	0.500	0.793	0.359	0.026	.0158	0.560

Knob clutch and slip torque.
Range 11-24 inch-ounces



M3926/3A

Series Number

	A Diameter ± .016	B Height ± .031	C ± .016	D ± .016
0	0.750	0.750	0.500	0.094
2	1.000	1.000	0.562	0.125
4	1.500	1.500	0.688	0.250

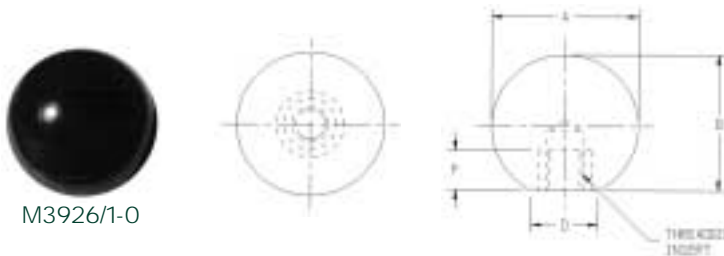
Knob, control, tapered

ORDERING GUIDE FOR MIL-K 3926 SERIES

Series	Thread		Material 1	Material 2	Color
	UNC-2B	UNF-2B	Plastic	Plastic w/insert	
0	A-.1640-32	B-.1900-32	A, B	-	B- Black
2	E-.2500-20	C-.2500-28	A, B, C, D, E	A, B, C, E	R- Red
4	F-.3125-18	D-.3750-24	C, D, E, F, G	C, D, E, F, G	G- Gray
	G-.3750-16				O- Olive Drab
	H-.4375-14				

EXAMPLE: M3926/3-3B2B

	Series	Thread	Material	Color
	.750	.1900-32		
M3926/3-	3	B	2	B



M3926/1-0

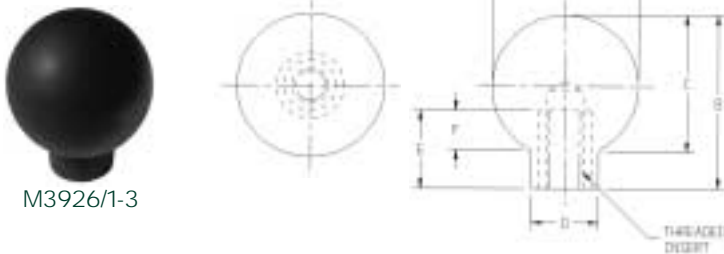
Series Number

	A ± .016	B ± .031	C ± .016	D ± .016	E	F
0	3/4	-	45/64	-	-	7/16
3	1-1/2	1-13/16	-	11/16	13/16	-

Knob, control, ball

ORDERING GUIDE FOR MIL-K 3926 SERIES

Series	Thread		Material	Color	
	UNC-2B	UNF-2B	1- Plastic	2- Plastic w/insert	
0	A-.1640-32	B-.1900-32	1- Plastic	2- Plastic w/insert	B- Black
3	E-.2500-20	C-.2500-28	1- Plastic	2- Plastic w/insert	R- Red
	F-.3125-18	D-.3750-24			G- Gray
	G-.3750-16				O- Olive Drab
	H-.4375-14				



M3926/1-3

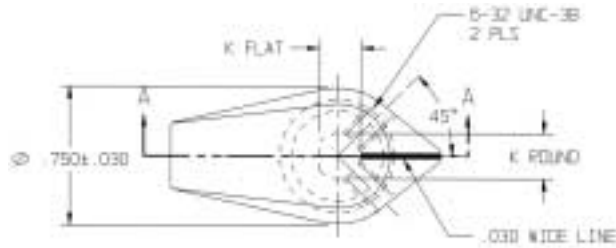
EXAMPLE: M3926/1-0A1B

	Series	Thread	Material	Color
	.700	.1640-32		
M3926/1-	0	A	1	B

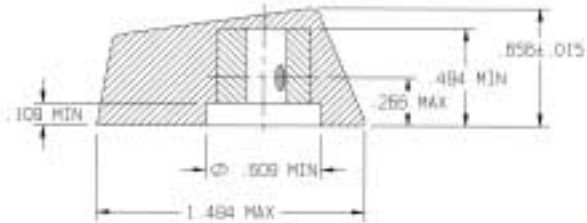




MS90120-1



MS90120-2



MS90120

Size	A ±0.030	Nut Clearance		D Max.	Shaft Hole Depth E Min.	F ±0.015	H Max.	M Max.	Set Screws (2) 1/4" Shaft Hole
		B Min.	C Min.						
1	0.750	0.609	0.109	0.266	0.484	0.750	0.766	2.328	6-32UNC-2A
2	0.750	0.609	0.109	0.266	0.484	0.656	0.578	1.194	6-32UNC-2A

Notes

- Material: Plastic to meet requirements of MIL-K-3926.
- Color: Black lusterless #37038 per Federal Standard 595.
Gray lusterless #36231 per Federal Standard 595.
White line- White lusterless #37038 per Federal Standard 595.
Phosphorescent line to conform to MIL-K-3891, TT-P-54, Type 1 color green to yellow green.
- All dimensions in inches, tolerances shown.
- For design feature purposes, this standard takes precedence over procurement documents referenced herein.

ORDERING GUIDE FOR MILITARY SERIES

Size	Color	Style	Shaft Hole Diameter
1	B-Black	01- Bar w/White Line	None- 1/4"
2	G-Gray	02- Bar w/Phosphorescent Line	D- 1/4" "D" Flat

EXAMPLE: MS90120-1 G 01 D

	Size	Color	Style	Shaft Hole Diameter
	0.750	Gray	Bar w. White line	1/4" "D" Flat
90120-	1	G	01	D

